

Complete trolley kits

SK04

Instruction Manual



⚠ **WARNING:** Read carefully and understand all ASSEMBLY AND OPERATION INSTRUCTIONS before operating. Failure to follow the safety rules and other basic safety precautions may result in serious personal injury.

Intended Use

- For short, variable transportation distances.
- For installation works and movement of heavy loads.
- The steering handle give you precise control making it easy to manoeuvre large machinery or into tight areas.
- Moving speed no exceeding 5m/min.
- Minimum turning circle is 3m.

Important Safety Information

All maximum carrying capacities are based for use on a steel surface ,Which withstands the pressure of the chain-roller ,For safety ,the carrying capacities in complete sets are calculated so that 2 Roller Skates could support the full load on uneven surfaces.

The track surface is important for the safe transportation of the load ,not the carrying capacity the Roller Skate ,Tiles are unsuitable .Movement on tarmac and concrete is restricted .In these cases it is recommended to put a steel plate of a minimum of 10mm thickness underneath.

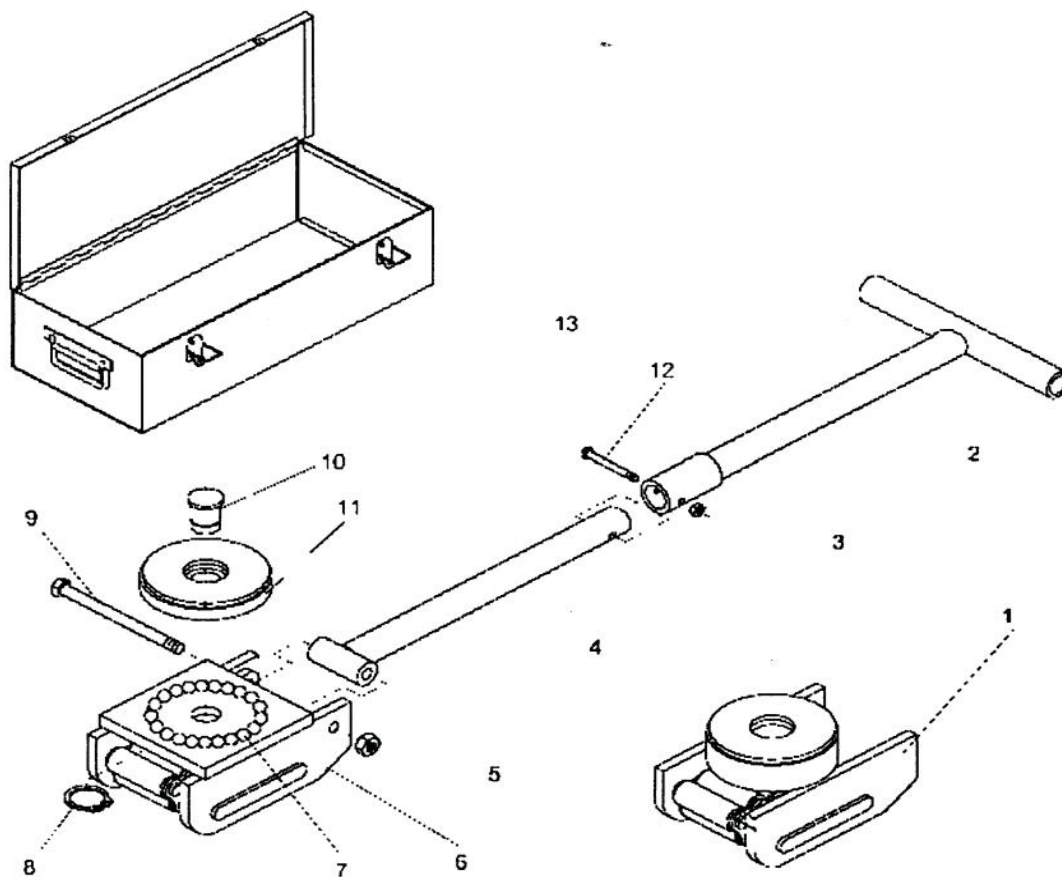
Due to the little effort required to overcome the rolling resistance(4-7%of the total load)precautionary measures must be taken for use on inclined surfaces.

Technical Specifications	
Model	SK04
Capacity (lb.)	8,800
Dimensions of Roller Skate L x W x H (in.)	6-1/16 x 4-1/64 x 3-35/64
Swivel Top (mm)	φ90
Dimensions of Roller Dia. x L (mm)	φ18 x 51
Length of Handle Bar (in.)	33-15/32
Dimensions of the box L x W x H (in.)	18-1/2 x 7-3/32 x 6-19/64
Weight of Kit (lb.)	53

Main Parts of Machinery Mover



Including 4 roller skates, 2 steering handles, one metal box.



NO.	Description	Q'ty	NO.	Description	Q'ty
1	Fixed base	2	8	Retaining ring	2
2	Upper pull rod	2	9	Hexagon bolt M10 x 110	2
3	Hexagon nut M6	2	10	Axis of gravity	2
4	Bottom pull rod	2	11	Disk assembly	2
5	Hexagon nut M10	2	12	Hexagon bolt M6 x 45	2
6	Base	2	13	Iron box	1
7	Steel ball Sφ11	44	14		